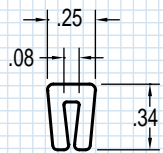


U Channel

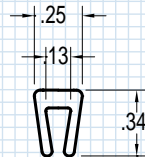
UHMW/PE

- Low friction, wear resistant cap clips on flat bar material
- Provides belt and chain support and edge protection
- Reduces noise
- Ultra smooth finish

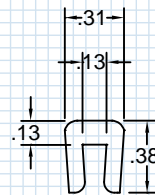
Standard UHMW/PE U Channel are white and come in 250 and 500 foot coils. Easily available with Anti-Static, Lubricated, and Anti-Microbial additives.



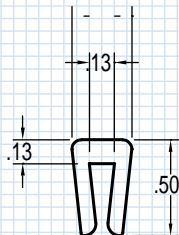
SPX 1931926
CAT UB-0062
For 1/16" Bar or
16 Gauge Steel



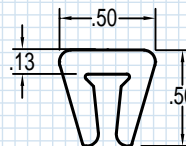
SPX 1012710
CAT UB-0125
For 1/8" Bar or
11,12 Gauge Steel



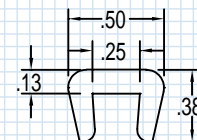
SPX 1861344
CAT UC-0125S
For 1/8" Bar or
11,12 Gauge Steel



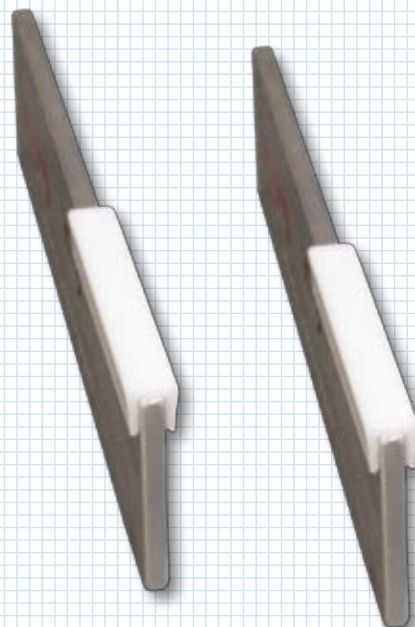
SPX 1002618
CAT UC-0125
For 1/8" Bar or 11,12 Gauge Steel



SPX 1002611
CAT UC-0188
For 3/16" Bar



SPX 1012708
CAT UC-0250S
For 1/4" Bar

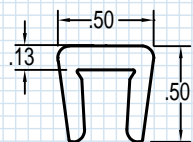


Custom colors and sizes available

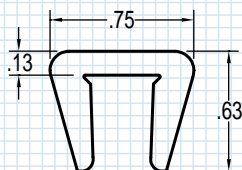
734.722.0100

U Channel

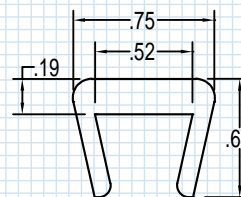
UHMW/PE...continued



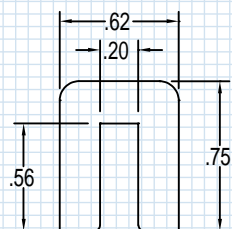
SPX 1002624
CAT UC-0250
For 1/4" Bar



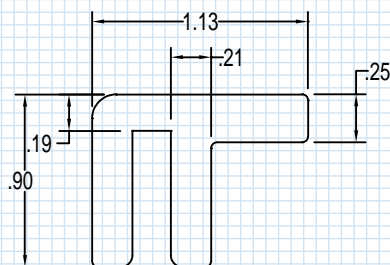
SPX 1002619
CAT UC-0375
For 3/8" Bar



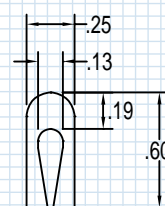
SPX 1032960
CAT UE-0500
For 1/2" Bar



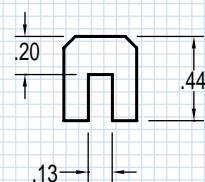
SPX 1022869
CAT PE-2869
For 3/16" Bar



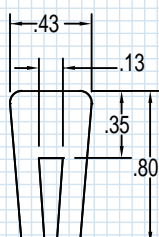
SPX 1022786
CAT PE-2786
For 3/16" Bar
for Chain w/Hold Down Tab



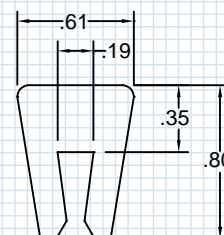
SPX 1032898
CAT UE-2898
For 1/16" Bar
16 Gauge Hemmed Steel



SPX 1992446
CAT PF-0125
For 1/8" Bar or
11,12 Gauge Steel



SPX 1962170
CAT UH-0125
For 1/8" Bar or
11,12 Gauge Steel



SPX 1720436
CAT UH-0188
For 3/16" Bar